





Indoor / Outdoor  
IR Night Vision Camera  
Instruction Manual

Thank you for purchasing our product. Before installing this camera, please read this instruction manual carefully to ensure proper use.

## 1. Safety Precautions

	<b>CAUTION</b> RISK OF ELECTRIC SHOCK. DO NOT OPEN!	
<b>CAUTION : TO REDUCE THE RISK OF ELECTRICAL SHOCK, DO NOT OPEN COVERS. NO USER SERVICEABLE PARTS INSIDE. REFER SERVICING TO QUALIFIED SERVICE PERSONNEL.</b>		



Disposal of Old Electrical & Electronic Equipment (Applicable in the European Union and other European countries with separate collection systems).

- ◆ Although the camera is provided with tempered glass, please avoid all direct contact to eliminate contamination, and use cotton balls dipped in cleaning alcohol to clean the window.

## 2. Description

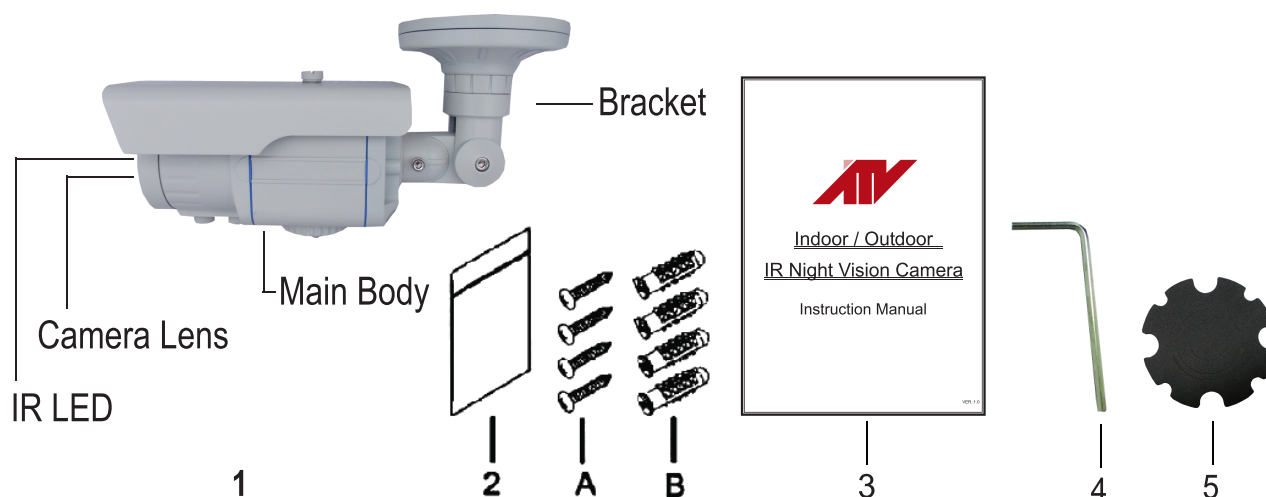
This Infrared Illuminator camera uses a highly sensitive 1/3" interline transfer color image sensor, which provides extremely long life and high reliability. This camera offers excellent image quality and functions with low lag and high burn resistance, and is not subject to distortions from magnetic fields.

Highly resistant to shock and vibration and easy to install, this camera is an excellent choice for your CCTV system.

### 3. Feature

- ◆ High resolution SONY Super HAD CCD II camera with 700TVL module.
- ◆ Total pixels of sensor: 480K(NTSC) pixels.
- ◆ High sensitivity, low smear, excellent anti-blooming, and high S/N ratio.
- ◆ Supports functions: Auto Electronic Shutter (AES), Auto Gain Control (AGC), Auto White Balance (AWB), Back Light Compensation (BLC), and Flickerless mode (FL).
- ◆ External adjust varifocal Lens.
- ◆ Low DC power consumption.

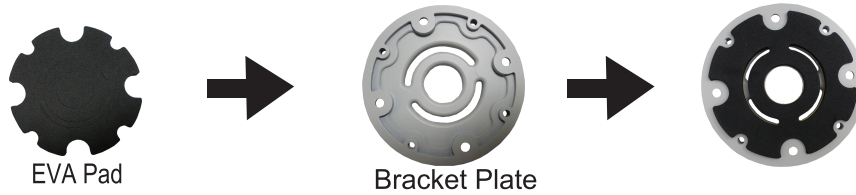
### 4. Content



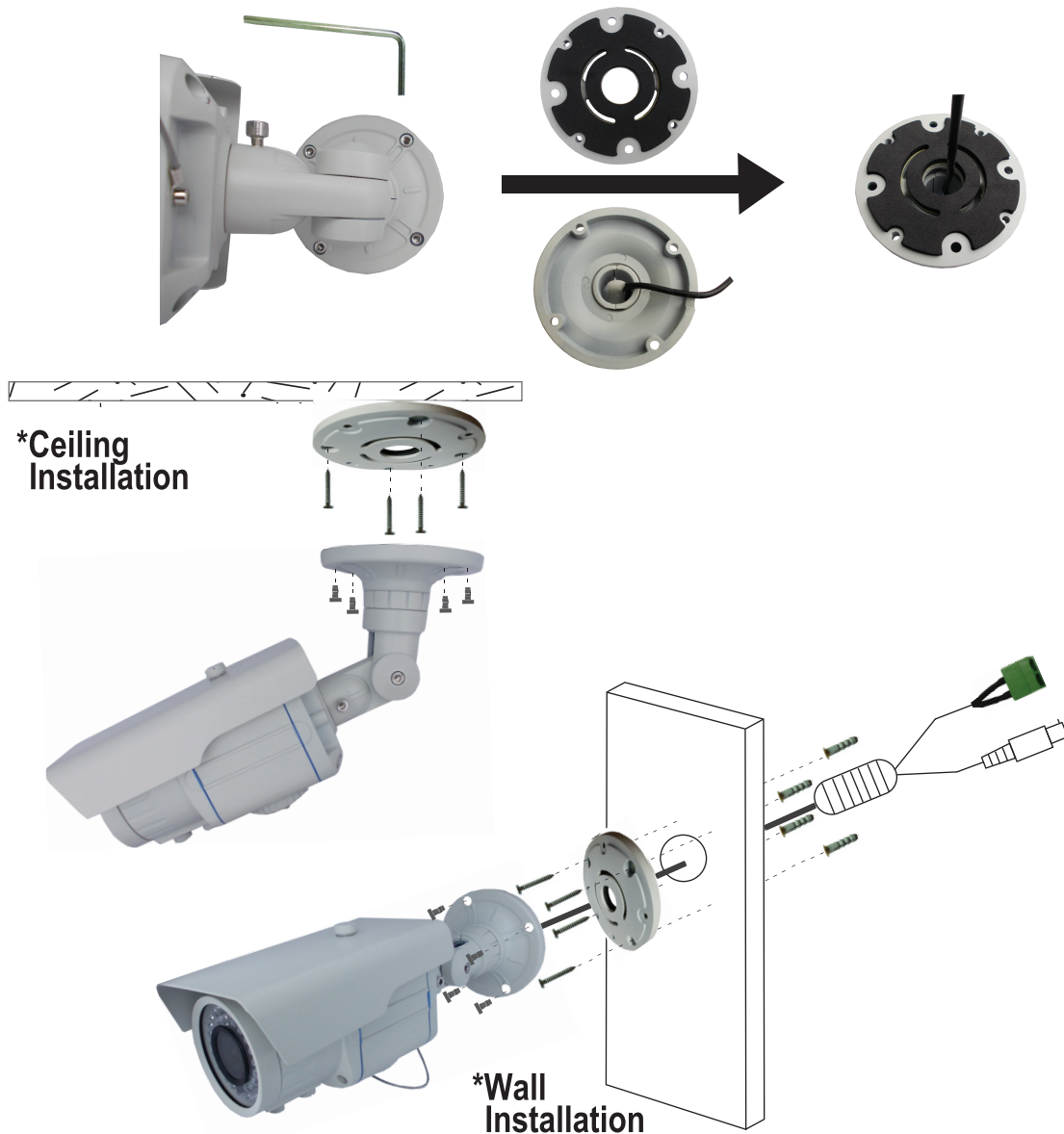
Item	Name of Part		Quantity
1	Camera		1
2	Bag		1
	A	Fix Retaining Screw for Bracket	4
	B	Anchor	4
3	Instruction Manual		1
4	Hex Tool		1
5	EVA Pad		1

## 5. Installation & Operation

1). First, stick the EVA pad to the bracket plate.

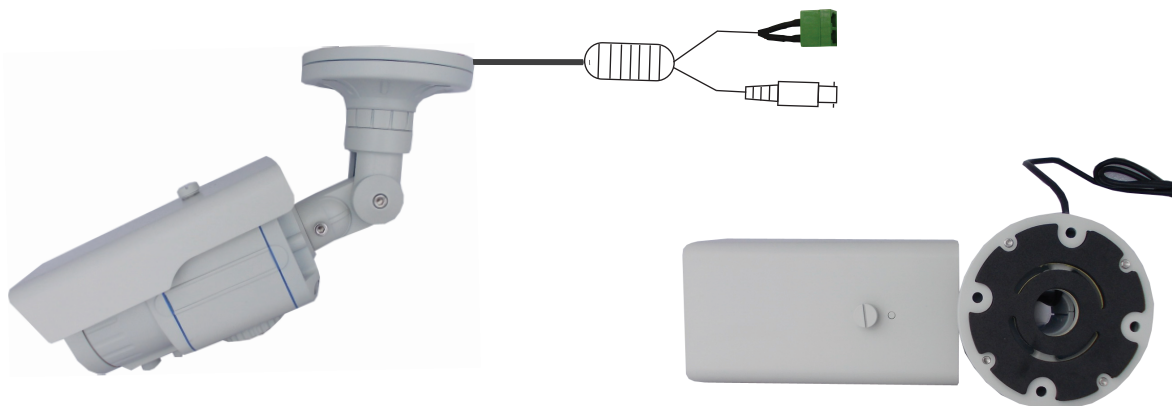


2). If cable is preferred to go through walls, loosen the bracket base screws, take away the bracket plate, the cable through the center hole of the bracket plate, and drill a hole on wall and make sure it is big enough for the BNC connector and power jack to pass through.

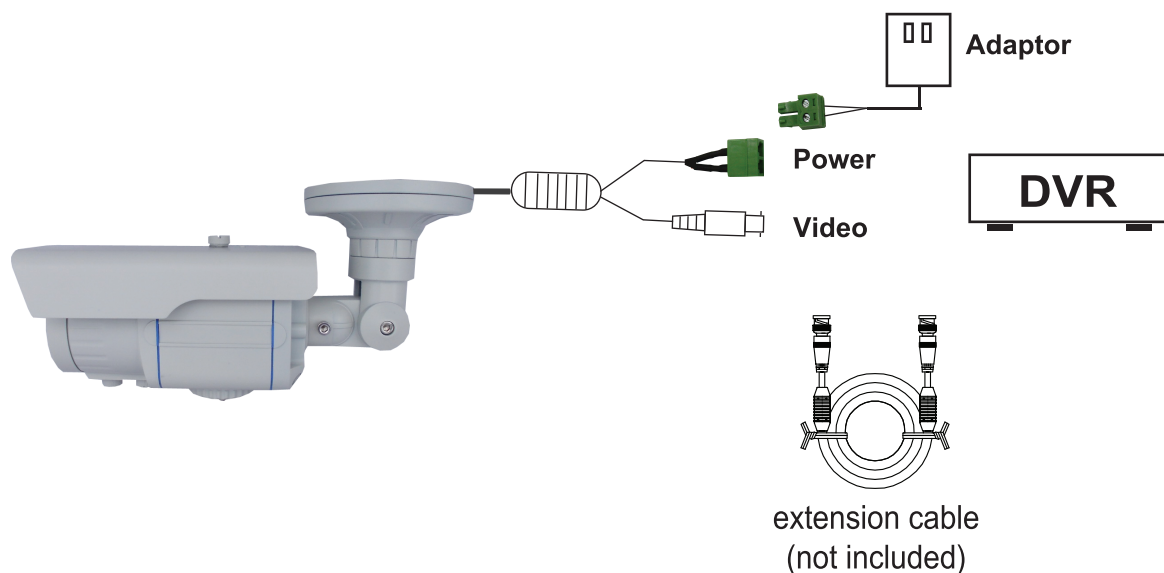




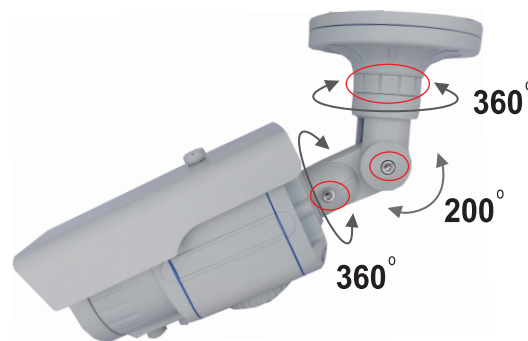
- 3). If cable is does not need to go through walls, the cable can be fixed directly to the wall surface.



- 4). Connect the BNC end of the camera to the extension cable and the other end of the extension cable connect to your DVR. Installer connects either 12VDC or 24VAC to the screw terminals. (polarity is not important with either voltage).



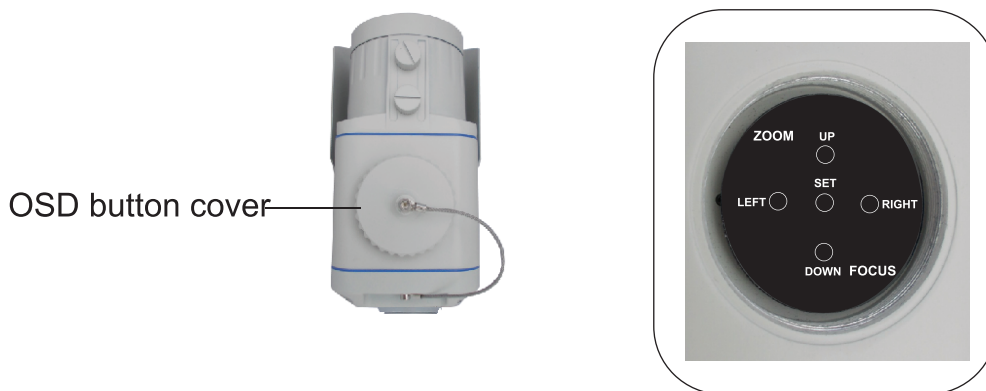
- 5). Power up the camera and video should appear on screen.
- 6). You may now adjust the camera viewing angles by adjusting the camera bracket position.
- 7). Loosen the screws of the camera bracket, adjust the Pan, Tilt and rotate mechanism by hand, once the desired viewing position is achieved, tighten up the camera bracket screws to fix the position "as shown in below photos".



- 8). The camera is equipped with a Vari-Focal Lens for zoom in / out feature. To Zoom, you must rotate the handle on the camera body and adjust the focusing to get the best image.



- 9). The camera is equipped with a OSD menu, you must remove the OSD button cover of the camera body, press the up, down, left and right buttons and adjust the image effects to get the best image.
- 10). The camera is now all set up, close the camera OSD button cover.



<b>SETUP MENU</b>	
LENS	AUTO ↵
SHUTTER/AGC	AUTO ↵
WHITE BAL	ATW
BACKLIGHT	OFF
PICT ADJUST	↵
D-WDR	OFF
MOTION DET	ON ↵
NEXT ↵	
EXIT ↵	SAVE ALL

<b>SETUP MENU</b>	
PRIVACY	OFF ↵
DAY/NIGHT	EXT1 ↵
2DNR	↵
CAMERA ID	OFF
SYNC	INT
LANGUAGE	ENGLISH
CAMERA RESET	
BACK ↵	
EXIT ↵	SAVE ALL

## 6. Specification

According to the camera purchased, select and refer to the appropriate specification below:

<b>Model No.</b>	<b>BSS7212 / BSS7550</b>	
<b>Image Device</b>	1/3" Color SONY Super HAD CCD II Image Sensor	
<b>Picture Elements</b>	NTSC:976(H) × 494(V)	
<b>Resolution</b>	700 TVL	
<b>Min. Illumination</b>	0.1Lux / B&W	
<b>S/N Ratio</b>	More than 58 dB	
<b>Scanning System</b>	2:1 Interlace	
<b>Electronic Shutter</b>	1/60s ~ 1/100,000s	
<b>Gamma</b>	0.45	
<b>Sync System</b>	Internal	
<b>Lens Furnished</b>	2.8-12mm or 5-50mm Varifocal	
<b>White Balance</b>	Automatic Tracking	
<b>2DNR</b>	NR-MODE / Y Level / C Level	
<b>Backlight</b>	OFF / HLC / BLC	
<b>D-WDR</b>	ON / OFF	
<b>Motion Detection</b>	ON / OFF	
<b>Privacy</b>	ON / OFF	
<b>Day / Night</b>	EXT1 / B&W / Color / Auto / EXT2	
<b>Pict Adjust</b>	OSD Key control	
<b>OSD</b>	OSD Key control	
<b>Gain Control</b>	Auto	
<b>Video Output</b>	1 Vp-p/ 75 Ohms, BNC	
<b>IR LEDS</b>	42 IR LED	
<b>IR Range</b>	More than 30m(100ft)	
<b>Power Supply</b>	DC12V±10% or AC 24V±10%	
<b>Power Consumption</b>	<b>IR LED OFF</b>	140 mA max.
	<b>IR LED ON</b>	650 mA max.
<b>System Device</b>		
<b>Operating Temp.</b>	-10℃ to 50℃ (14°F to 122°F)	
<b>Operating Humidity</b>	0% RH~80%RH	
<b>Waterproofing Criterion</b>	IP 66	
<b>Construction</b>	Aluminum Case	
<b>Dimensions</b>	97(W)x 81 (H) x 168(L)mm (Body only)	

(Note: Design and specifications are subject to change without prior notice.)