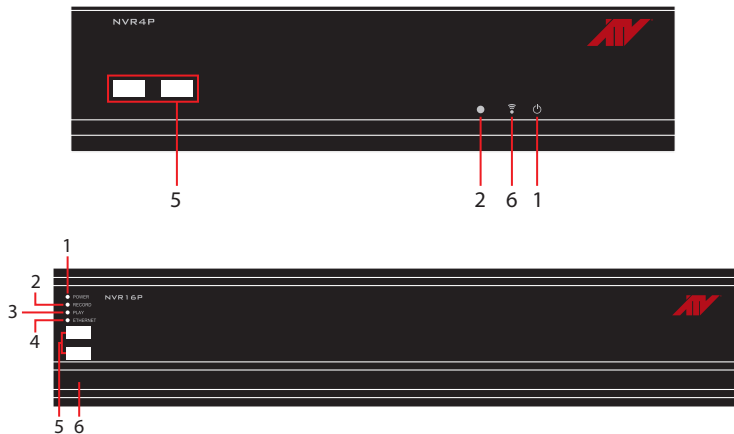


# NVR Quick Setup Guide

## >INSTALLATION AND OPERATION (1)

### Front Panel



1	Power LED	2	Record LED	3	Playback LED
4	Network LED	5	USB 2.0 Port	6	IR Remote Sensor

### SYSTEM SETUP



When power is turned on, you will see the initializing screen and it may take up to one minute to complete. After initializing is complete, an Easy Setup screen will appear.

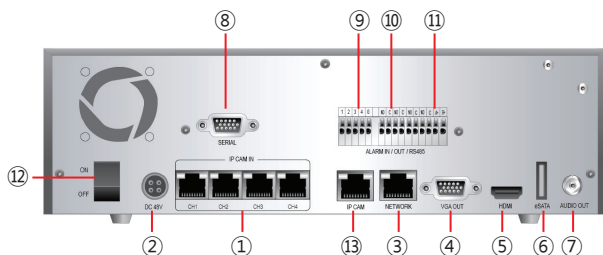
### Easy Setup Wizard

An Easy Setup screen will appear. If you don't want to go through the setup steps at this time click the Exit button and the system will go to the main live screen. When you want to set up the system just click the Easy Setup Menu or Main menu in the right-click mouse menu. If the Easy Setup is finished and returns to the live screen, the auto connected camera image will be displayed on the live screen. The NVR system will record automatically as regular recording.

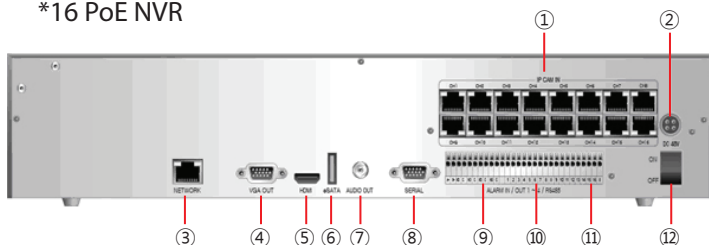
\* For basic system setup and configuration it is recommended to complete all the setup steps.

### Rear Panel

#### \*4 PoE NVR



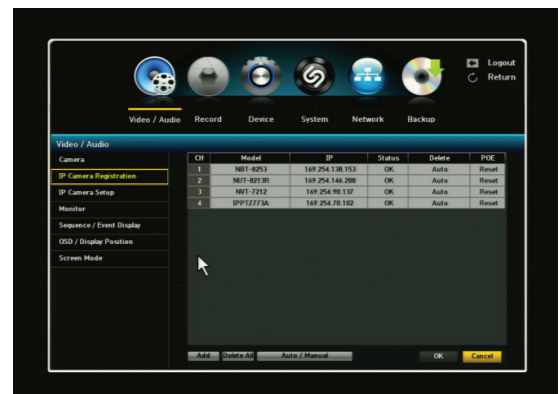
#### \*16 PoE NVR



1	Ip camera input	6	eSATA	11	RS485 port
2	Power adapter input	7	Audio out	12	Power switch
3	Network port	8	Serial port	13	Ext. ip camera input
4	VGA out	9	Alarm/sensor input		
5	HDMI	10	Alarm out		

### IP Camera Registration

You can check the IP camera list and register the desired IP cameras automatically or manually. If the cameras are connected directly to the IP CAM port, the NVR system will register the cameras automatically. If the cameras are connected to the switch/hub, the NVR system will discover the cameras automatically and then you can register the cameras to the NVR by clicking the "Registration".



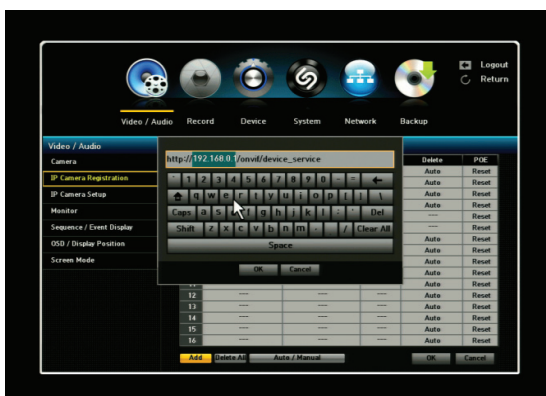
# NVR Quick Setup Guide

## >INSTALLATION AND OPERATION (2)



Quick search: To search quickly for cameras the user must enter the camera ID and Password.

Detail search: In this case the system will automatically check for all camera ID's and passwords and will generally take longer than "Quick Search".



Manual add: To manually add an ONVIF compliant camera the user must enter the full IP address.

Ex. "http://xxx.xxx.xx.xx/onvif/device\_service".

In this case, the IP camera must support Onvif.

## IP Camera Setup

The user can set up the IP camera details: Profile, Resolution, FPS, Quality, GOP, Motion, Sensor and Audio.

For motion detection and event recording function, the user select the Motion as ON position.



## Record Quality Setup

The user must set the recording quality for each camera for both Normal and Event conditions. The user can set the "Secondary" Stream for the normal condition and the "Primary" Stream for the event condition. This function allows the user to save the HDD recording size. If you click the Setup Tab, the IP Camera Setup window will be appeared.



# NVR Quick Setup Guide

## >INSTALLATION AND OPERATION (3)



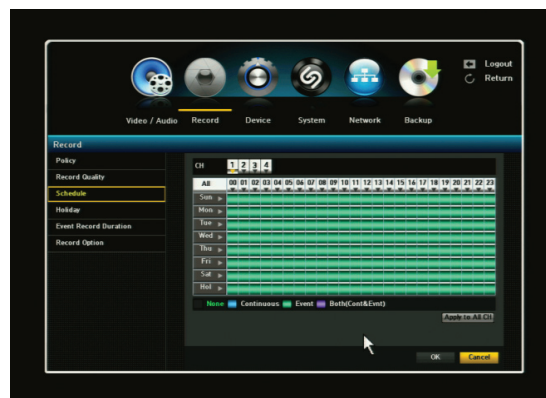
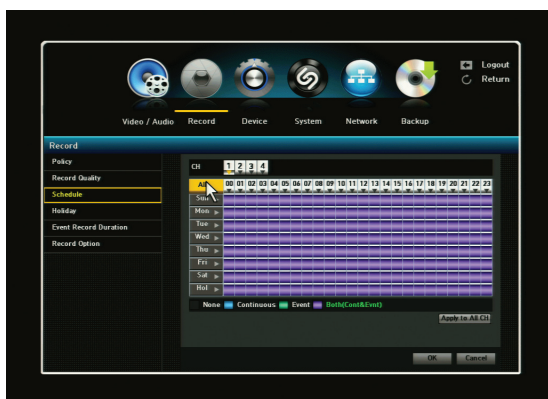
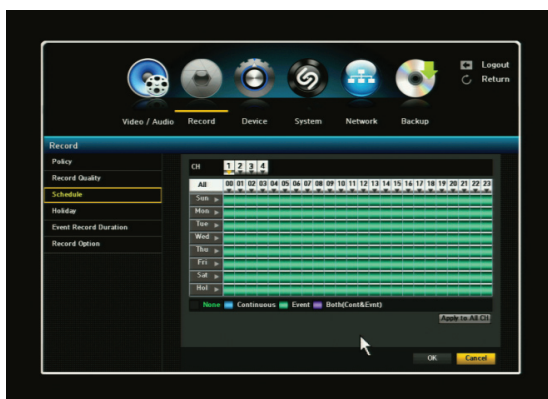
- 1) CH : 1 ~ 4 (or 16): Select channel for schedule recording.
- 2) SELECT DAY [SUN – SAT, Hol]
- 3) TIME: Move the cursor to desired time and press ENTER key to set it highlighted. Press click again to change schedule recording option by color.

You can set different recording schedule and type for each camera (channel) or you can apply current schedule setting to all other cameras by pressing “Apply to All CH” button. Apply To All Channel: If selected, “Apply to All CH” window will appear. Press OK to apply the setup to all channels. When the recording schedule setup is done, click OK.

### Recording Schedule Setup

### Motion / Event Recording Setup

For motion / event recording function, the user selects the Motion as ON position in the IP Camera Setup menu and set the channel (camera) as Event recording in the Record > Schedule menu. Then the icons (motion and event icon) will be appeared on the live screen as below.



This menu allows you to create your own recording schedule and trigger type. To enable this feature, the schedule recording feature at RECORD->POLICY->SCHEDULE menu must be turned “ON”. Using direction keys and ENTER button, choose preferred record types (such as Continuous, Event, Both (Cont&Evnt)) on the selected time and date. Different color will represent different recording types.

**\* The NVR will set the motion area in the full screen. If the user wants to set the motion only for the specific area, the user should set up the motion manually by accessing to the IP camera web.**

# NVR Quick Setup Guide

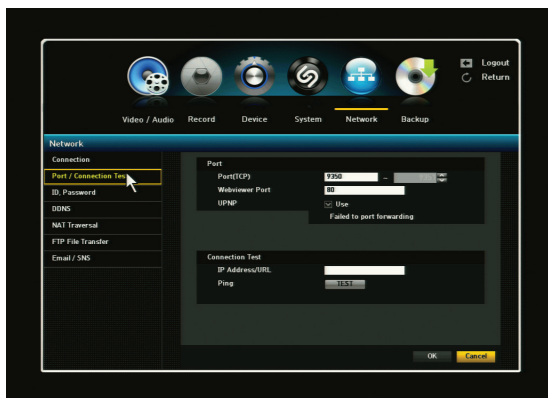
## >INSTALLATION AND OPERATION (4)

### Network Connection Setup

You can set up the network connection route and protocol.



- 1) Connection Mode: Sets the network connection mode.
- 2) Bandwidth: Sets the maximum data flow to be transferred (Upload speed).  
Options will vary depending on the selected connection mode.
- 3) IP, Gateway, Subnet Mask and DNS
  - For Static IP: You can directly input IP address, Gateway, Subnet Mask and DNS.
  - For Dynamic IP: IP Address, Gateway and Subnet Mask are set automatically.
- 4) When the connection setup is complete, click <OK>.



- 1) Port (TCP): Initially, 9350-9351 is set.  
It increases / decreased by TCP:
- 1) WebViewer Port: Enter the port number for the Web Viewer.  
Initially, it is set to 80.
- 2) When the port setup is complete, click OK.

UPnP: This function will automatically perform port forwarding to your router. By checking the box, the system will automatically do port forwarding. If your router does not support UPnP, a FAIL message will appear. If the router does support UPnP, then a SUCCESS message will appear. If the Port is already in use message appears, this indicates that particular port is already in use so you must change to a different port.

### GENERAL OPERATION



After Easy Setup is completed or exited from Easy Setup menu, a live screen will appear.

When the user does not log-in the system and click on any and it will prompt you to the login dialog.  
Enter ID and Password by using the virtual keyboard and click OK.  
By default, the ID / Password is "admin" / "admin"

### Live Menu Description (Right Click Menu)



Screen Mode	Select how you would like to view screen
PTZ control	Activate PTZ window to control the PTZ function.
Zoom In	Can zoom in for the desired area.
Audio On/Off	Select the audio on or off
Freeze	Freeze Playback or Live scene
Stop Alarm	Stops the alarm output and the event monitoring.
Record Start/Stop	Starts/stops the manual recording
Play	Plays the search result (for 30sec, 1min, 5min, 10min and all)
Search	Search for recorded data (by time, event, capture, etc)
Backup	Backup data via USB drive
Main Menu	Access the main menu.
Information	Display system information
IP Cam INFO	Display IP camera information
Easy Setup	Quickly setup your system.
IP Camera Registration	Search the registered cameras and add the cameras.
Shutdown	Shut down the unit
Hide Launcher	Hides the launcher screen.
Logout	Log out.

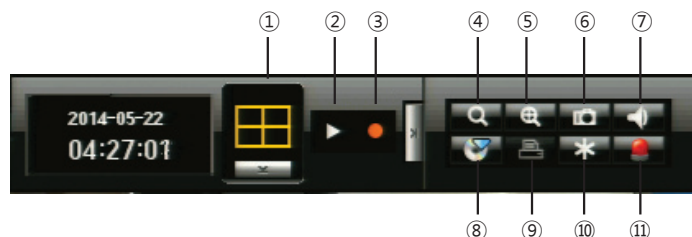


# NVR Quick Setup Guide

## >INSTALLATION AND OPERATION (5)

### Live Launcher

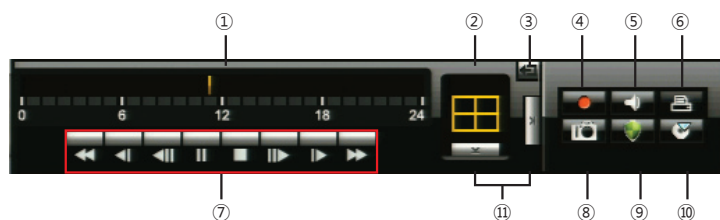
In the live mode, the Live Launcher helps you execute commands with one click without entering into main menu. The Live Launcher screen can be hidden if you move the mouse cursor near to the icon, a word bubble appears to show the tool tip.



- |               |                |                 |
|---------------|----------------|-----------------|
| 1) Scene Mode | 2) Resume Play | 3) Record       |
| 4) Search     | 5) Zoom In     | 6) Capture      |
| 7) Audio      | 8) Backup      | 9) Printer      |
| 10) Freeze    | 11) Alarm Off  | 12) Resume Play |

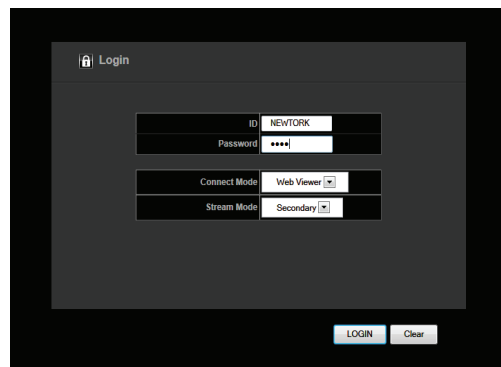
### Play Launcher

In the playback/search mode, the Play Launcher helps you to execute commands with one click without entering into main menu. The Play Launcher screen can be hidden if you move the mouse cursor near to the icon, a word bubble appears to show the tool tip.



- 1) Playbar: Displays the time of recorded data in the selected channel for the past 24 hours
- 2) Playback display mode: Allows user to playback of desired mode
- 3) Return button: Redirects to Search Menu
- 4) Record: Records all channels in Live Mode
- 5) Audio: Turns off all sound/ Audio off
- 6) Printer: Allows you to Print image either in Live or Playback Mode
- 7) Playback control button: Allows user to control playback of desired function
- 8) Capture: You can capture video image either in Playback Mode or Live Mode
- 9) Protect: You can protect recorded data from HDD overwriting
- 10) Backup: Backup your data by using USB Drive or External HDD
- 11) Menu expansion button: Open or hide menu buttons

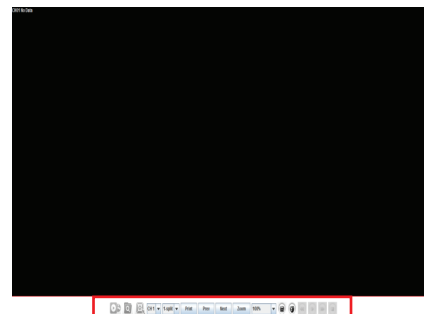
### NVR Web Viewer Connection



- 1) Open your internet browser.
- 2) Type the NVR's IP address in your internet browser (ex: <http://192.168.0.30>) or click the detected NVR in the "Smart Manager". You will be directed to screen as left.
- 3) The default ID / Password: admin / admin.
- 4) Select the connect mode (Web viewer or Setup)
- 5) If you select the Web Viewer mode, there will be JAVA initializing stage.

\* Before running your Web viewer, JAVA will need to initialize. If the JAVA is not installed in your PC, please install it first from the CD tile or internet web site.

When you connect to your NVR web-viewer, you will see a screen as below.



- 1) Connect/Disconnect Button: Connect to NVR which is designated in Login pop-up window. To disconnect or connect to other NVRs please click this button again.
- 2) Search Button: You will be able to search for data by calendar search.
- 3) Setup Button: Will allow you to setup you own personal NVR configuration
- 4) Channel Selection Button: Can choose any channel to display in full screen display mode
- 5) Multi Screen Button: Can set display mode in Full, 4CH(or 8CH or 16CH for specific model)
- 6) Print Button: You will be able to print selected channel.
- 7) Previous Button: to go back to previous channel or split mode channels/multi screen mode.
- 8) Next Button: Takes you to the next channel or set of split mode channels/multi screen mode.
- 9) Zoom Button: Zoom IN in one channel mode. Select how much and where to Zoom IN.
- 10) Resolution Button: select resolution and adjustments in single channel mode.
- 11) Record Button: to enable recording on your NVR. Press it again and will disable recording.
- 12) PTZ Control Button: Can control your PTZ camera that's connected to the NVR.
- 13) Playback Control Buttons: Rewind, Play, Fast Forward & Stop