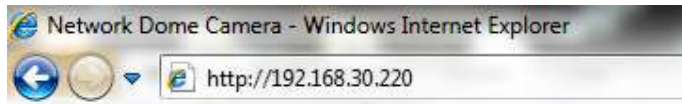
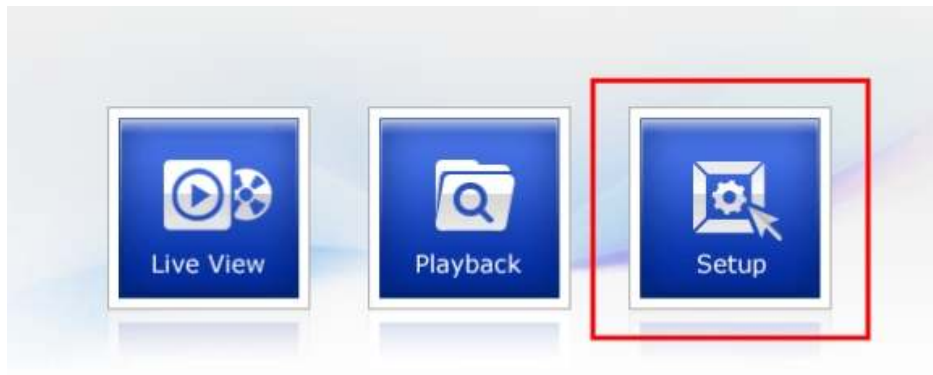


Firmware Update Guide for IP Camera's

1. If not already connected to the camera, type the IP address for the IP camera in the URL of your browser.



2. Click Setup menu on the Web main page or on the right top of Live View screen.



OR

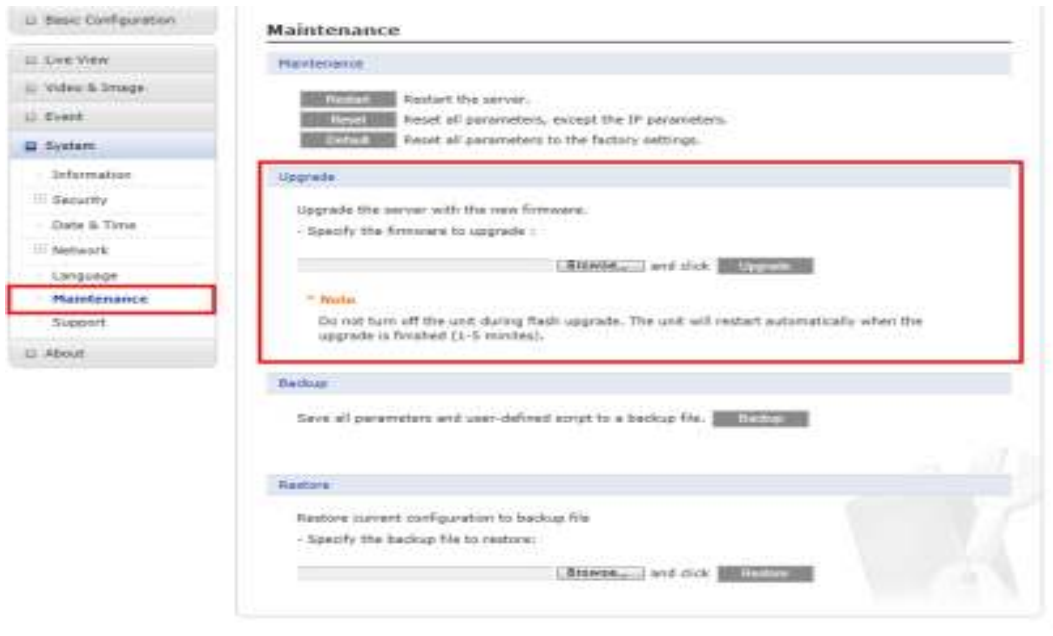


3. Input ID and Password to get into the Setup page.

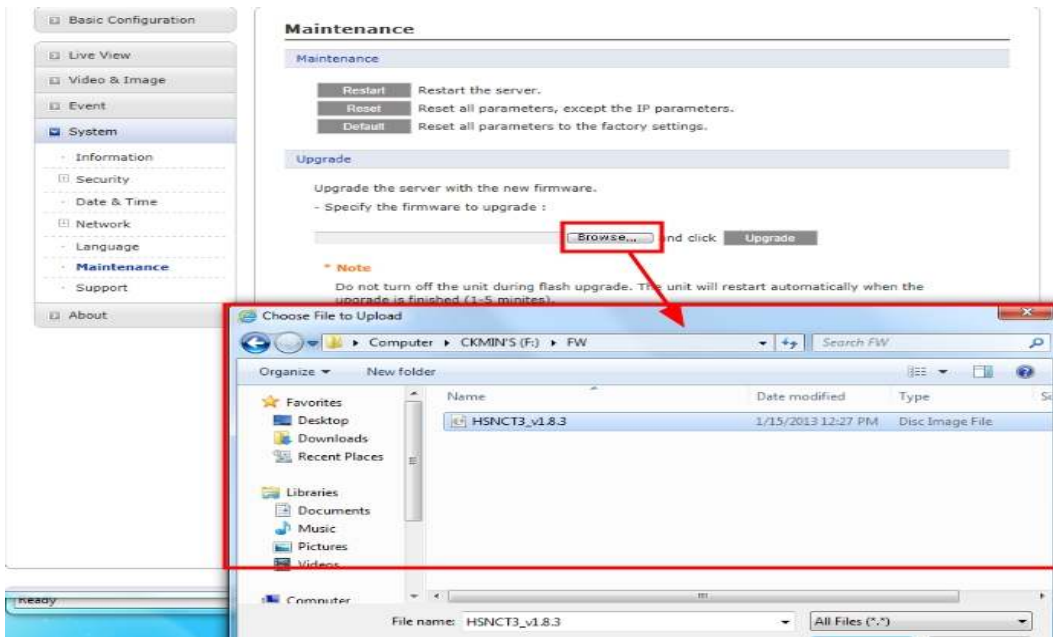
(Factory default ID & P/W: admin)




4. Select System on the left side.
5. Select Maintenance and look for Upgrade



6. Select Browse and locate the firmware file using Window Explorer. Select the file and click Open.

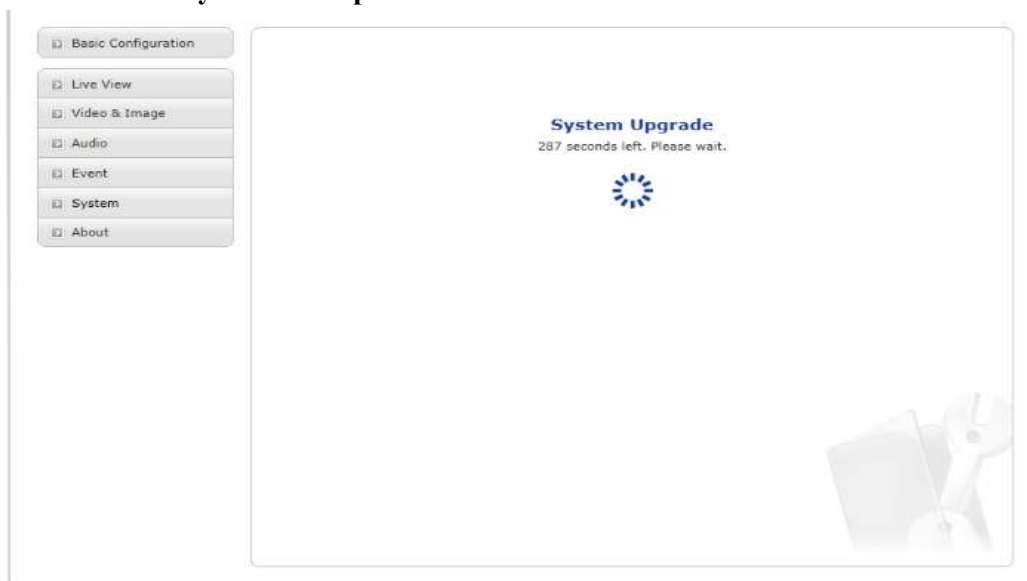


7. Click the Upgrade button



The screenshot shows a web interface with a sidebar on the left containing menu items: Basic Configuration, Live View, Video & Image, Event, System (selected), Information, Security, Date & Time, Network, Language, Maintenance, Support, and About. The main content area is titled "Maintenance" and contains several sections: "Maintenance" with buttons for Restart, Reset, and Default; "Upgrade" with instructions to specify a firmware file (F:\FW\SNCT1_01.03.03.img) and a "Browse" button, followed by an "Upgrade" button highlighted by a red arrow and the word "Click"; "Backup" with a "Backup" button; and "Restore" with a "Restore" button.

8. The firmware update takes about 5 minutes. The IP camera reboots automatically after the update is finished.



The screenshot shows a web interface with a sidebar on the left containing menu items: Basic Configuration, Live View, Video & Image, Audio, Event, System (selected), and About. The main content area displays "System Upgrade" with a progress indicator and the text "287 seconds left. Please wait." Below the text is a blue circular progress indicator. A faint image of a camera and tools is visible in the bottom right corner.

DO NOT POWER DOWN THE CAMERA DURING THE FIRMWARE UPDATE PROCESS.